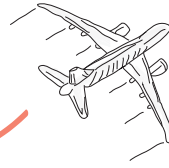


Should I Fly



OR DRIVE?

A PRINTABLE WORKSHEET

FLYING

TIME FLYING	
TICKET PRICE <small>(PER TRAVELER)</small>	
BAGGAGE FEES	
AIRPORT PARKING	
FOOD STOPS	
RENTAL CAR	
<i>Final totals:</i>	

DRIVING

TIME DRIVING	
FUEL COST <small>{BIT.LY/TRIPCOSTCALCULATOR}</small>	
HOTEL STAYS	
FOOD STOPS	
TOLLS	
WEAR AND TEAR ON CAR	
<i>Final totals:</i>	